

AUTOTRONIK-SMT

SMT Pick & Place Machine for LED Boards LD806V6 / LD812V6



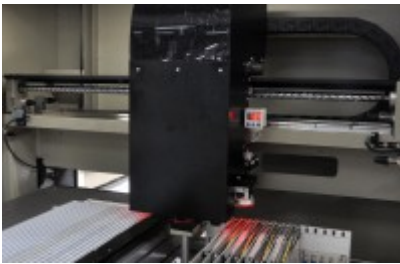
The SMD placement machine LD812 has been specially designed for use in the LED PCBs medium and high production quantities . The machine supports the processing of printed circuit boards with a length of up to 1200 mm (optionally up to 1800 mm) .

Controlled air surges at the pick-up nozzles ensure the release of the " sticky " LED components during placement . Using the auto- selection system can be controlled to alternate feeder for empty indents without interruption to produce . In addition, allow the feeder band connections to minimize production interruptions.

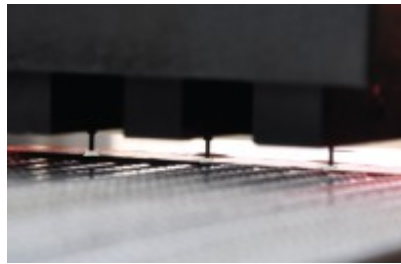
Heavy welded frame ensure precise placement even at high speeds . The multi- head support achieved placement rates up to 30,000 Componets / Hour.

The model is equipped with an optical centering system that allows image processing over a "bottom vision camera". Equipped with a dual conveyor system and intelligent software a high placement rate and efficiency in the pick -and-place process is guaranteed.

AUTOTRONIK-SMT



Heavy-duty welded, uni-body steel frame provides stability for precision placements even at high speeds



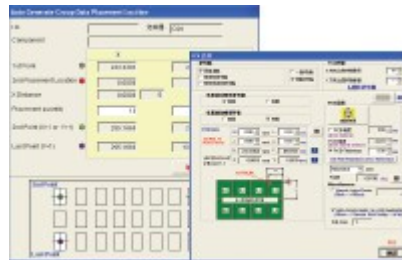
Upward-aimed true 'Vision On the Fly' Alignment cameras on the pick & place heads allow easy set-up for a wide range of LED components



Support various PCB board type, includes, LED boards up to 1200 mm long (or option to 1800mm), flexible PCB , or circular PCB



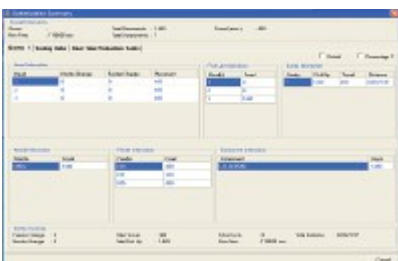
Flying vision alignment on various LED components as well as SMDs. Teflon® nozzles also available for sticky LED components



With simply parameters inputs, the Windows-based software calculate the component coordination automatically



UCAD® universal CAD import and conversion for direct transfer of PCB data from ASCII, AutoCAD and Excel data formats



Software tools analyze placement data and component mix to provide optimum feeder arrangement that minimizes head travel and tool changes



Real time monitoring screen for previewing production progress, production speed and production quantity during production

AUTOTRONIK-SMT

Modell	LD812V6	LD806V6
PCB specification		
Max. board size (standard)	1200mm X 320mm	600mm X 320mm
(option conveyor)	1200mm X 300mm	600mm X 300mm
Board thickness	0.2mm to 3mm	
Board fixing principle	Magnetic fixture (option conveyor)	
Placement Specification		
Alignment principle	Bottom Vision Camera	
No. of placement heads	6	6
Placement rate (max)	30 000 / hour	30 000 / hour
Component size	1mm X 0.5mm to 20mm X 18mm	1mm X 0.5mm to 20mm X 18mm
Feeder capacity		
Feeding capacity	Max. 16 feeder ports (8mm tape)	
Mechanical Specification		
XY axis drive mechanism	X axis: placement head; Y axis: board transport	
Board loading method	Working stage (option conveyor)	
In line production	Supported by option conveyor system	
Placement accuracy	+/-0.05mm	
X-Y Axis Resolution	0.01mm	
Z Axis Resolution	0.01mm	
R Axis Resolution	0.09 degree	
Programming		
Operation system	Windows 7 based	
Support language	English (mult language support)	
Programming	Easy programming (option CAD import)	
Physical specification		
Approximate Net Weight	860KG	820KG
Machine dimension (LxWxH)	2630mm X 1130mm X 1490mm	1230mm X 1130mm X 1491mm
Facility Requirements		
Air Pressure	5.5 bar	
Standard Voltage	220V(AC)	
Power	4200W	