

„simply brilliant...“



the patented
alternating-image-inspection

Quins
easy

„...brilliantly simple“

From our customers, for our customers
developed and constantly improved
Since 2006 constantly in use

More than 450 users

The Visual Inspection

one of the most important tests in your manufacturing process !

No matter what you produce - each step has to be visually inspected.
Even a simple letter can not leave the office without visual inspection.

Do not neglecting your visual inspection !

Especially in electronics production the visual inspection is an important part of any perfect testing strategy and therefore of your quality assurance.

Due to the variety of components, the increasing packing density and miniaturization of components a manual visual inspection is unreliable, an automatic optical inspection is partly too complicated and expensive, or not even possible.

Therefore, there is the „brilliantly simple“ inspection system !

The logo for Quins easy, featuring the word "Quins" in a large, bold, blue sans-serif font, with a horizontal line extending from the end of the "s" to the word "easy" below it, which is in a smaller, lighter blue font.

for all kinds of visual inspection,
the you need to perform simply, quickly and safely.

From 2006 till 2016, more than 450 users confirmed us

The logo for Quins easy, featuring the word "Quins" in a large, bold, blue sans-serif font, with a horizontal line extending from the end of the "s" to the word "easy" below it, which is in a smaller, lighter blue font.

is „simply brilliant“



Alternating Image Inspection ...

(aii - Wechselbild-Inspection)



The difference is between seeing and easy RECOGNIZING.

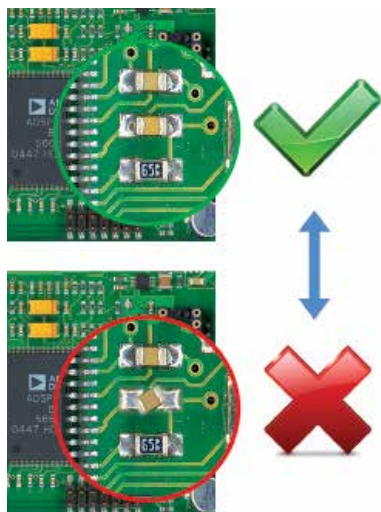
The patented Alternating Image Inspection shows the reference and the object to test, in alternation.

With a perfect centering of both images only the differences are flashing, the errors.

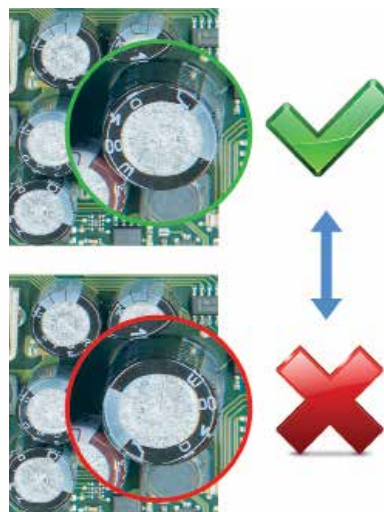
This supports the physiological perception, so that you RECOGNIZE ALL errors relaxed, easy and fast!

Without any programming effort, no matter what you verify!

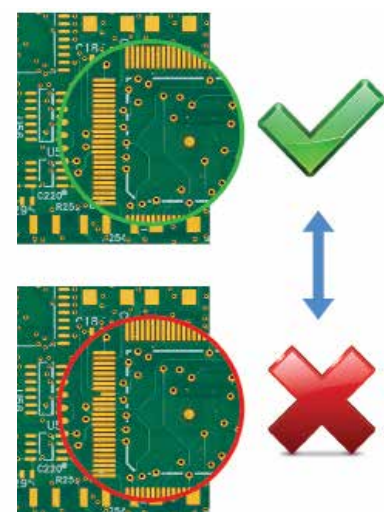
SMD



THT



LAYOUT



- ✓ SMD-mounting
- ✓ THT-mounting
- ✓ Mixed mounting
- ✓ PCB's
- ✓ 100 % inspection

- ✓ Series-inspection
- ✓ First article inspection
- ✓ Sampling test
- ✓ Setup control

with unsurpassed image quality and individual magnification!

... perfected



In 2 minutes ready for inspection

In 2 minutes you can get started, without programming !



Security

Check to 100%.
Make sure that EVERYTHING has been checked.



Documentation and Archiving

Quins easy stores all your images.
Each single board will be documented for you.
Achieve the basis for your quality assurance.



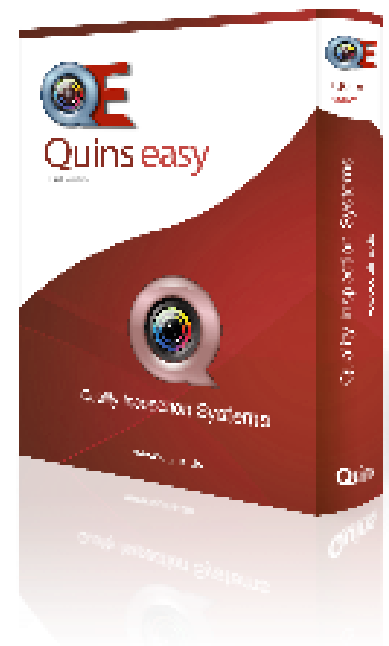
Logging

The overview of your manufacturing problems.
Quins easy logs all errors.
Only if you know your mistakes, you are able to eliminate these.



Unbeatable price

No further costs!
2 years full Online-Support!



- * **Save** - immediately during the first article inspection and setup controll!
- * **Reduce** - the idle time of your machines for the production release!
- * **Simplify** - your manual visual inspections
- * **Ensure your quality!**

... automated



Auto-adjustment
image stabilisation



Auto-segmentation
individual zooming



Difference display
alternating speed

The LC-Series

with CCD line camera



The best technology to display an A3 format, in high resolution homogeneous, is a CCD line camera !

With a resolution of 600 dpi, the image corresponds a recording of 71.6 megapixels.

This is possible only with a CCD line camera!

The especially developed LED illumination, with 2 double rows and 308 specially selected LEDs, illuminates your assembly without shadows.

1,600 candela light intensity let shine the lasered labels of the ICs.

The shadows of the solder meniscuses are clearly visible.

Also high THT components are optimally illuminated.

With a 50 mm go-through height, a distance of 62 mm downwards, respectively 2 standard levels (50- and 60 mm go-through).

With that you will see EVERYTHING what you have to inspect!

Technical data of the Quins LC-Series

Measurement (W x D x H)	693 x 504 x 323 mm
Weight	30 kg
Camera	CCD line camera (7.020 Px/line)
Max. resolution	part scan 1.200 dpi (interpolated) mainscan 600 dpi (optical)
Effective pixel	71,6 MPx (= 0,0423... mm/dot)
Max. image size	432 x 300 mm
Scann rate	3,8 ms/line (colour) 1,3 ms/line (black/white)
Illumination	double row LED illumination with 308 LED's light intensity 1,600 candela with 50 mm distance
Interface	USB 2.0
Input	80 W (during scanning)
OS	Windows 7 professional



ESD Save

Quins Computer for all systems

Computer	PC in optimized equipment 3,5 GHz, 4 GB RAM, 500 GB HDD, or 128 GB SSD
LCD-Monitor	22,5" Touch-Screen or TFT
Mouse/Keyboard	with magnifier function / standard



2 years warranty for Quins hardware

Release: 2017 / 04

Die LCM-Serie

mobile & flexible



The best technology to display an A3 format, in high resolution homogeneous, is a CCD line camera !
With a resolution of 600 dpi, the image corresponds a recording of 71.6 megapixels.

This is possible only with a CCD line camera!

The especially developed LED illumination, with 2 double rows and 308 specially selected LEDs, illuminates your assembly without shadows. 1,600 candela light intensity let shine the lasered labels of the ICs. The shadows of the solder meniscuses are clearly visible. Also high THT components are optimally illuminated. With a 50 mm go-through height, a distance of 62 mm downwards, respectively 2 standard levels (50- and 60 mm go-through).

With that you will see EVERYTHING what you have to inspect!

Technical data of the Quins LCM-Series

Measurement (W x D x H)	830 x 510 x 1950 mm (incl. monitor + 370 mm)
Weight	55 kg
Casters	75 mm diameter, for 4x50 kg
Camera	CCD line camera (7.020 Px/line)
Max. resolution	part scan 1.200 dpi (interpolated) mainscan 600 dpi (optical)
Effective pixel	71,6 MPx (= 0,0423... mm/dot)
Max. image size	432 x 300 mm
Scann rate	3,8 ms/line (colour) 1,3 ms/line (black/white)
Illumination	double row LED illumination with 308 LED's light intensity 1,600 candela with 50 mm distance
Interface	USB 2.0
Input	80 W (during scanning)
OS	Windows 7 professional
Computer	PC in optimized equipment 3,5 GHz, 4 GB RAM, 500 GB HDD, or 128 SSD
LCD-Monitor	22,5" Touch-Screen
Mouse/Keyboard	wireless, with mignifire function
LAN	RJ45 connection socket and Dual-Band Wireless-AC 8260 Wi-Fi + BT 4.2
Software	depending on equipment Quins easy, Quins easy Plus or Quins professional



Accessoires:
with optional fold-out
tables right and / or left



2 years warranty for Quins hardware
Stable, with light wheels even for rough terrain



LC 20 for mounted assemblies

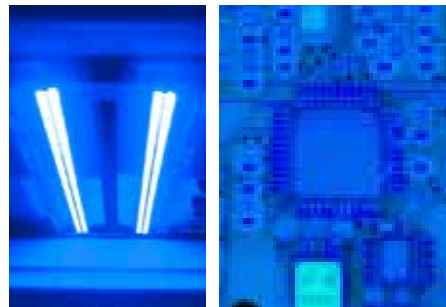
Drawer with assemblies assimilation
robust construction, easy to use,
also for double-side mounted boards



Max. assimilation size	510 x 349 mm (L x W)
Variable width	6 - 349 mm
Throughput height, top	50 mm (SMD/mixed assembly) 60 mm (THT)
Height bottom	62 mm (SMD/mixed assembly) 50,5 mm (THT)



LC 20/UV with additional UV-illumination



Protect your employees
from harmful UV rays,
during checking the coated assemblies!



LC 25 for printed circuit boards

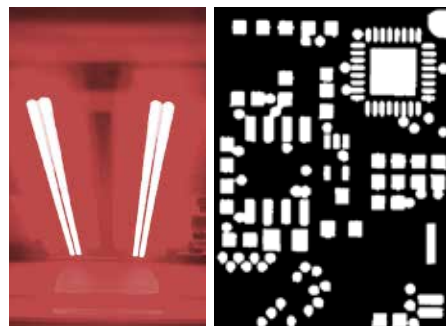
Turnable tableau drawer for a
black or white background



Max. assimilation size	600 x 390 mm (L x W)
Throughput height, top	10 mm
Positioning angles and stops, with magnetic holders	
Optional	Glass plate for films



LC 25/RED With additional RED-illumination



for high-speed black/white images.
The optimal check variant for layouts.

„brilliantly simple...“

Quins
easy

„...simply brilliant“

Expand Quins easy
with a variety of software modules
to **Quins Professional** !



Quins
Quality Inspection Systems

www.quins.de
made in Germany